

Windows Driver Installation and Remove Manual

For Windows XP Embedded.

Thermal Printer

Thermal Printer

Rev. 1.00

Contents

1. Manual guidance
2. Operating system
3. Driver Installation and Interface setup.
 - 3.1. Windows Driver Installation
 - 3.2. USB Interface setup
4. How to Setup Windows Printer Driver Settings.
5. Windows Printer Driver Specification.
 - 5.1. Fonts.
 - 5.1.1. Standard Fonts.
 - 5.2. Bar codes.
 - 5.3. Device control fonts.
6. How to uninstall the Windows Driver.

1. Manual guidance.

This manual describes the Windows Driver installation, uninstallation, special functions, and practical use in your application.

2. Operating System.

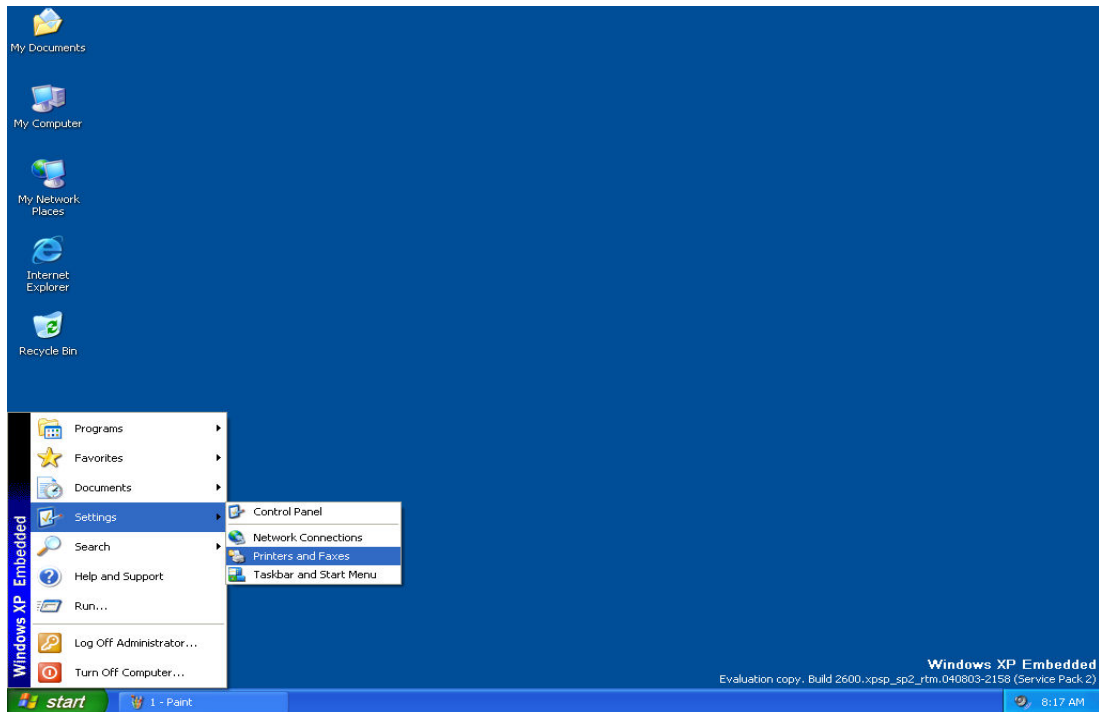
This software supports following operating systems.

Microsoft Windows XP Embedded

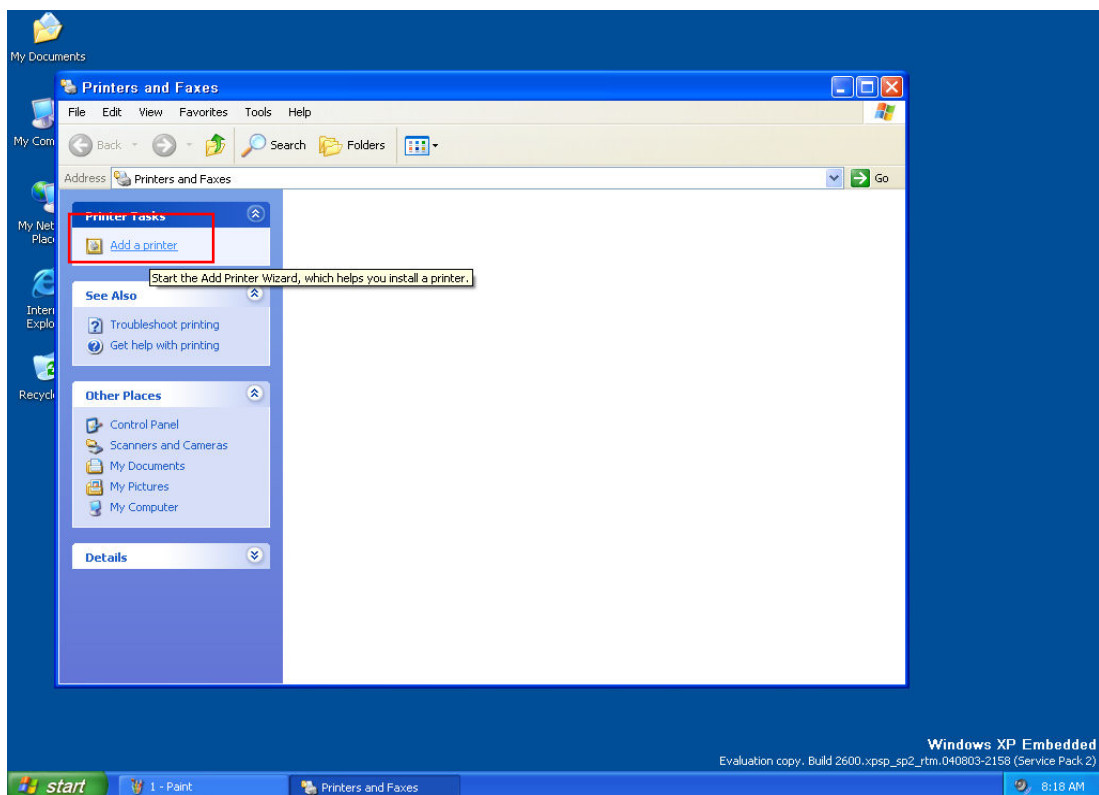
3. Installation and Setup.

3.1. Windows Driver Installation.

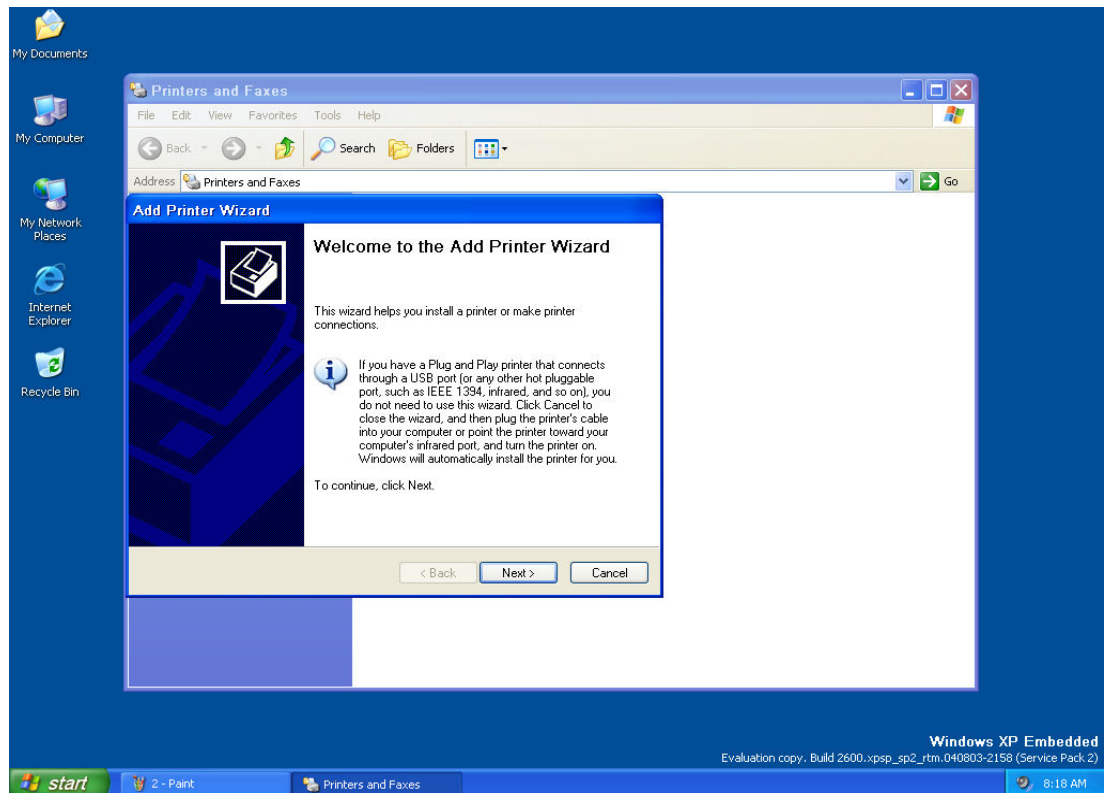
1) Click the Start → Settings → Printers and Faxes.



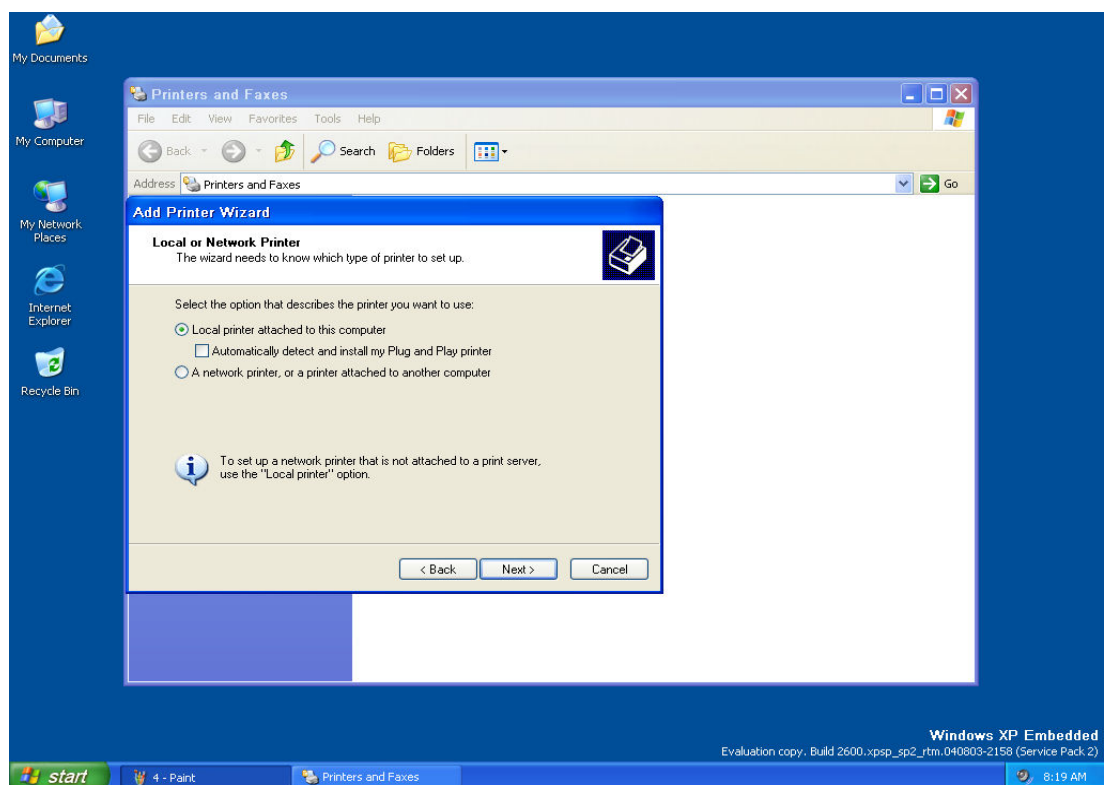
2) Click the “Add a Printer”.



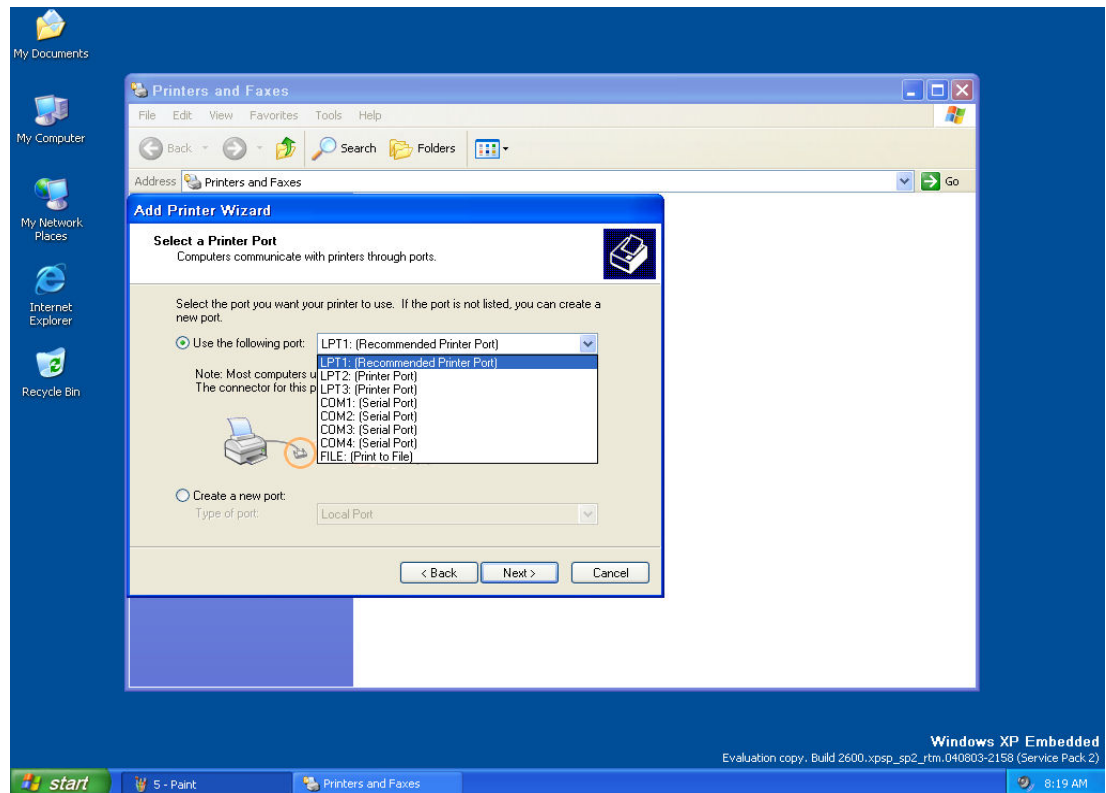
3) Click “Next” button.



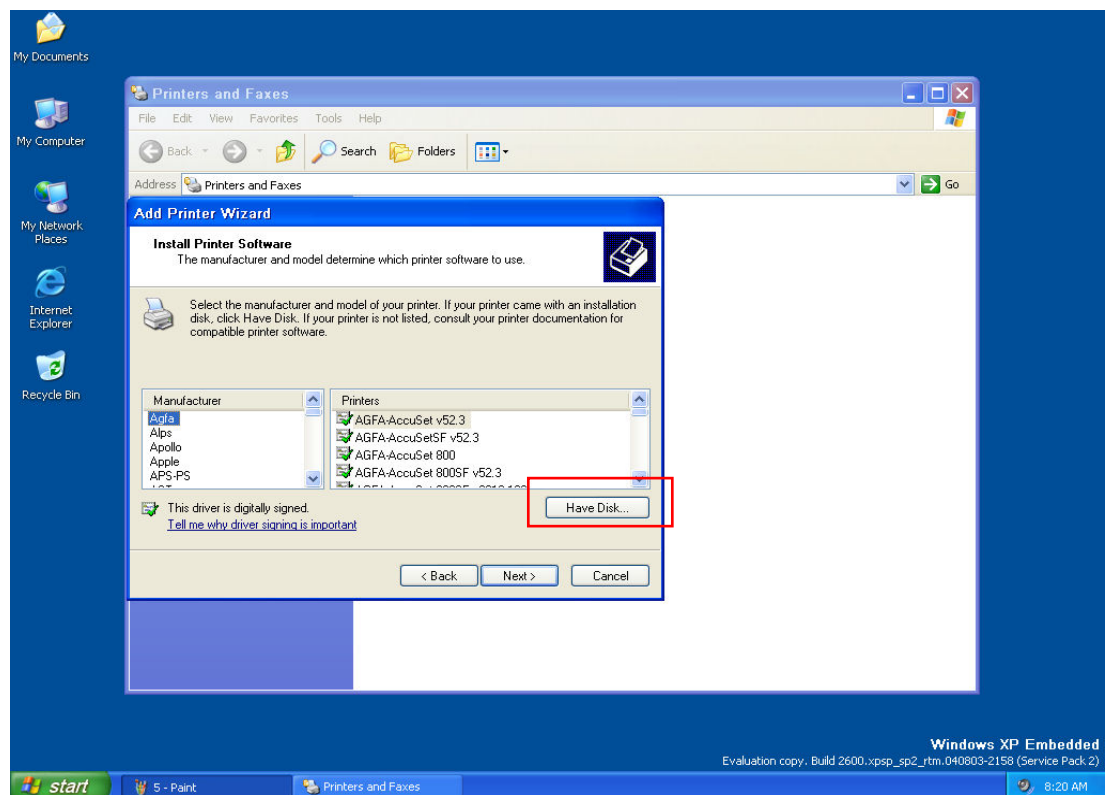
4) Select the option and Click “Next” button.



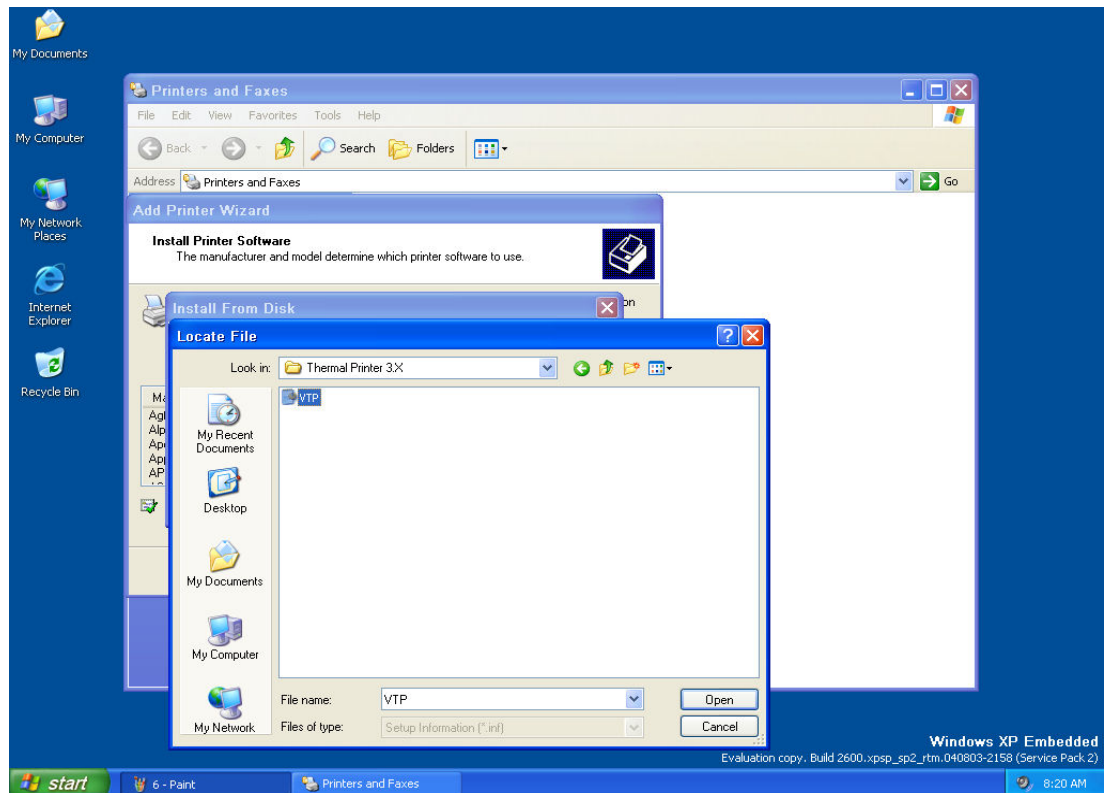
5) Select the Port and Click “Next” button.



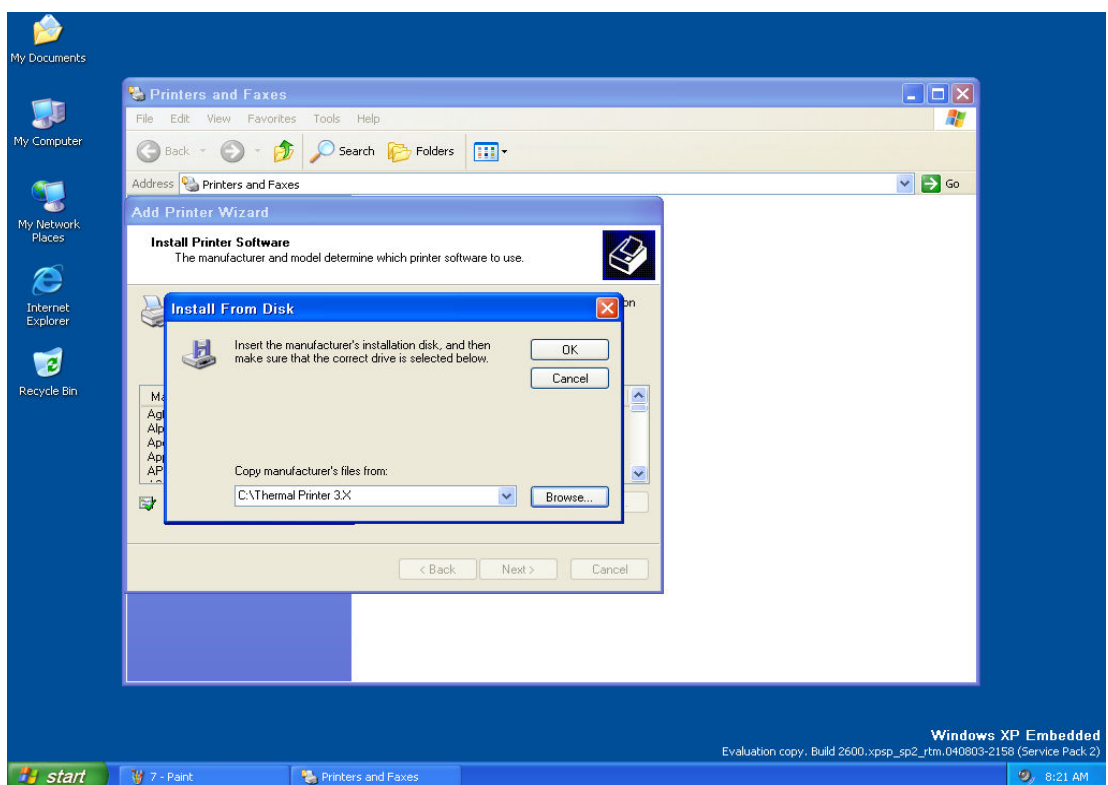
6) Click the “Hard Disk...” button.



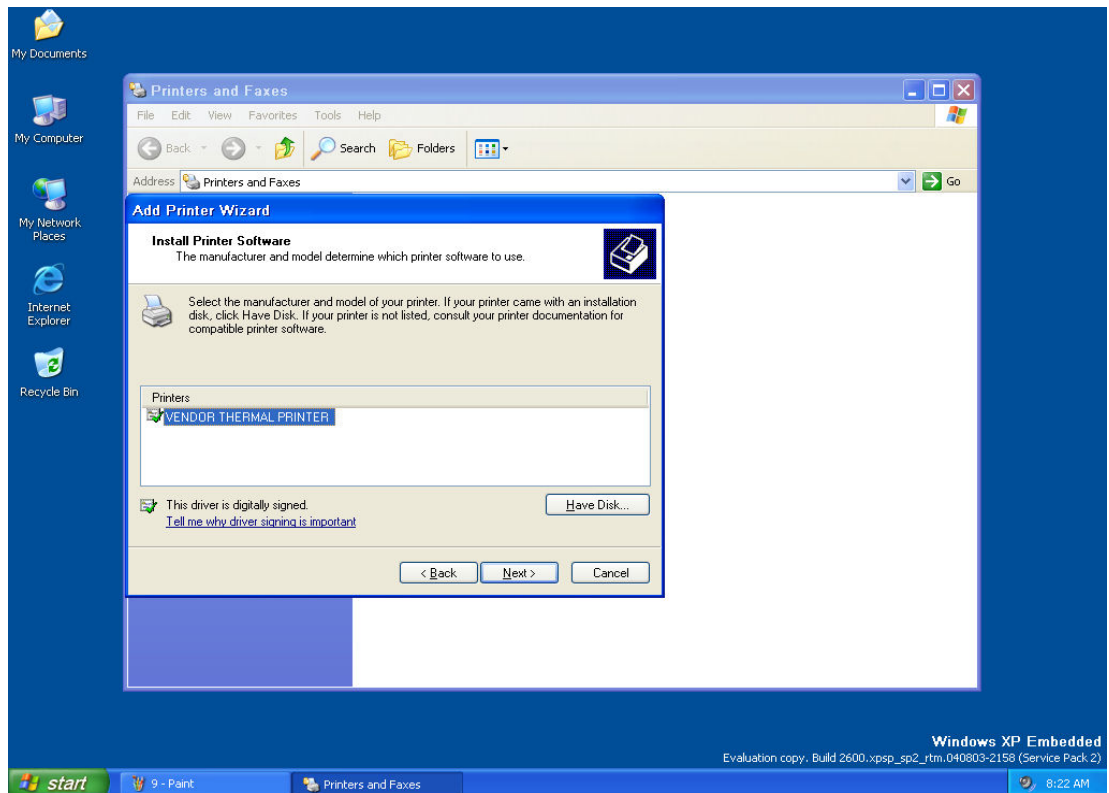
8) Select the installation file(VTP.inf) and Click the “Open” button.



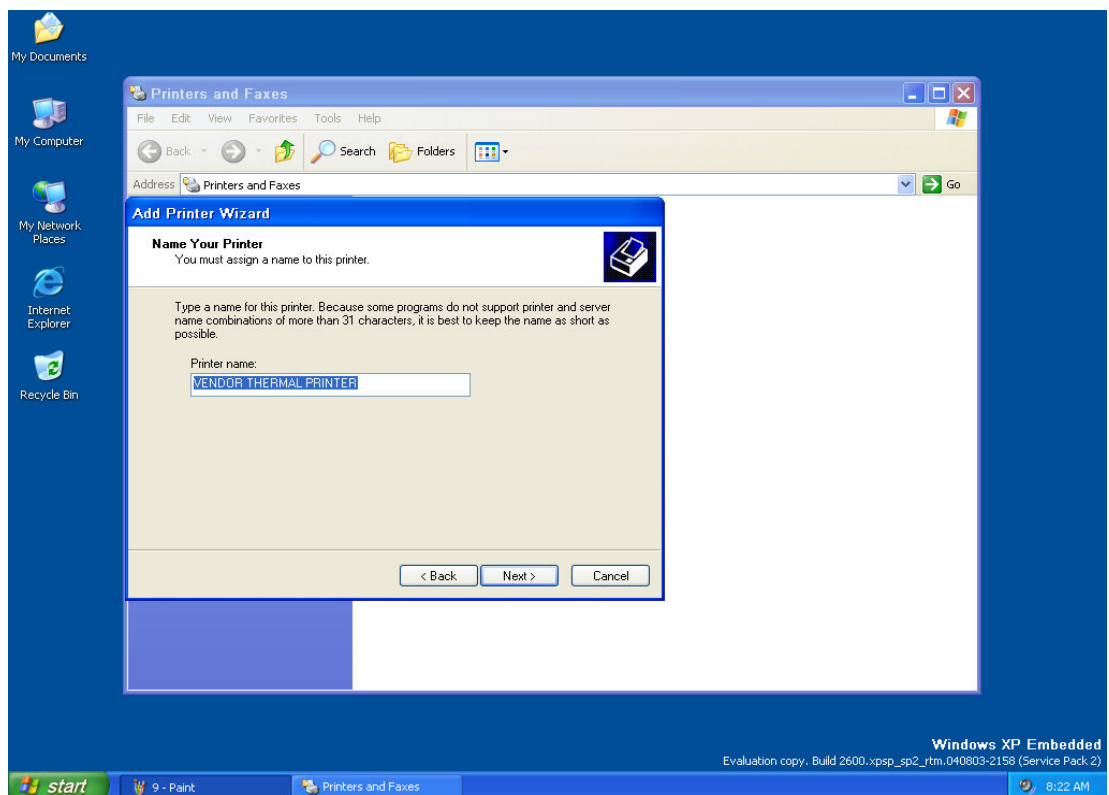
9) Click OK button.



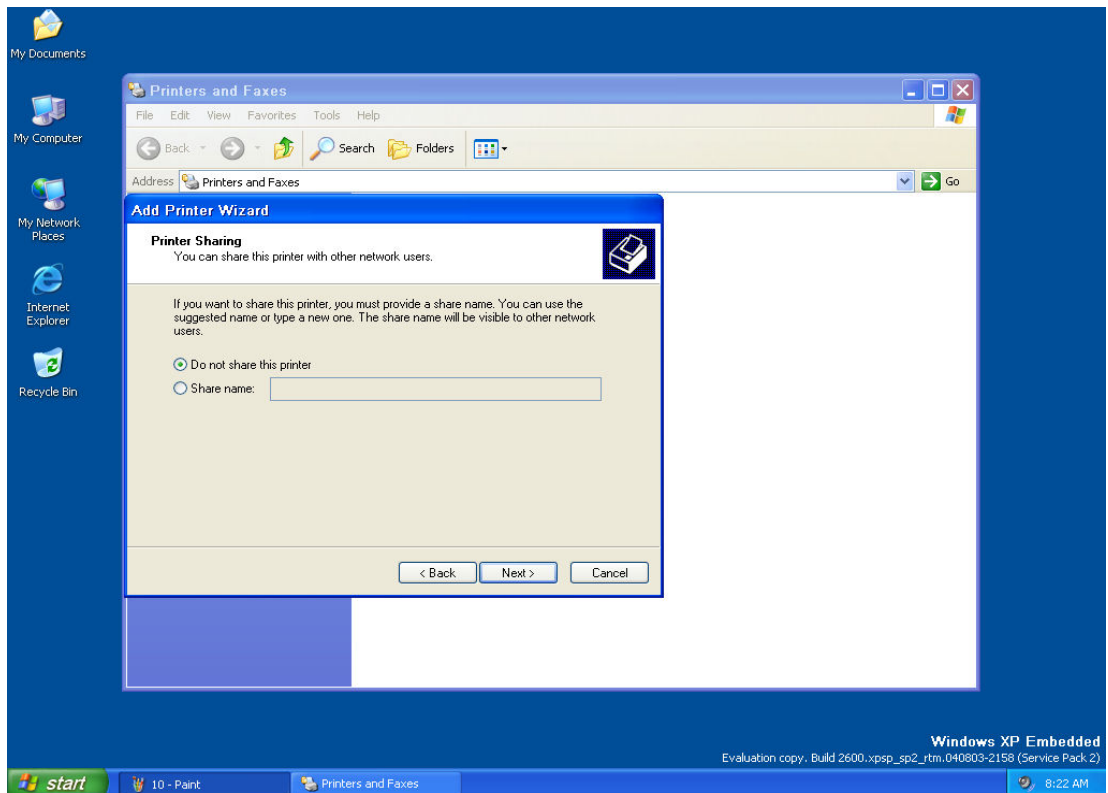
10) Select the Printers and click “Next” button.



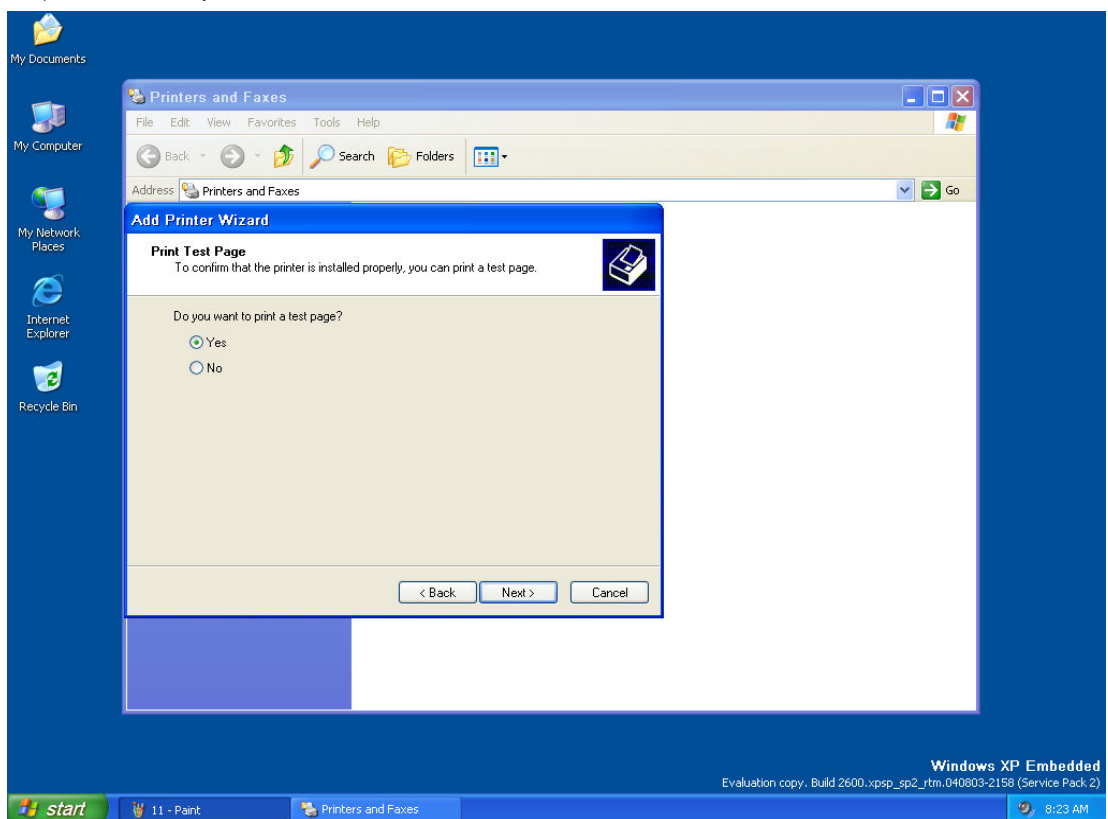
11) Click “Next” button.



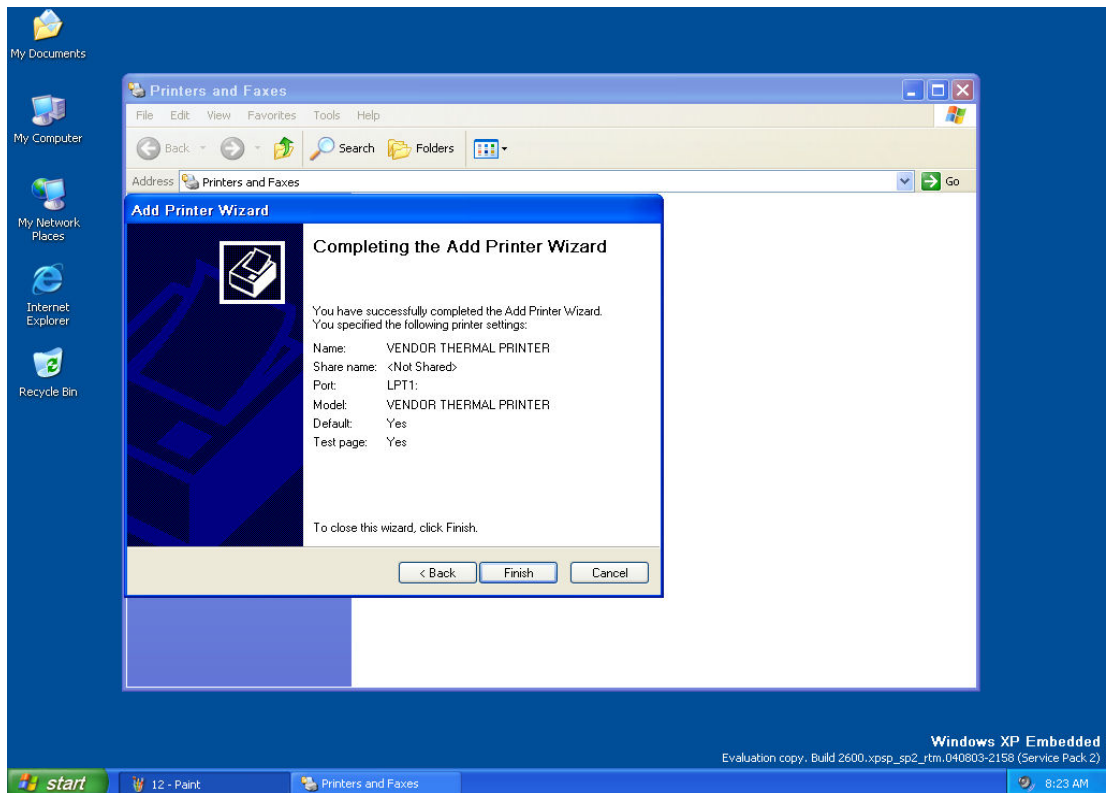
12) Select the option and click “Next” button.



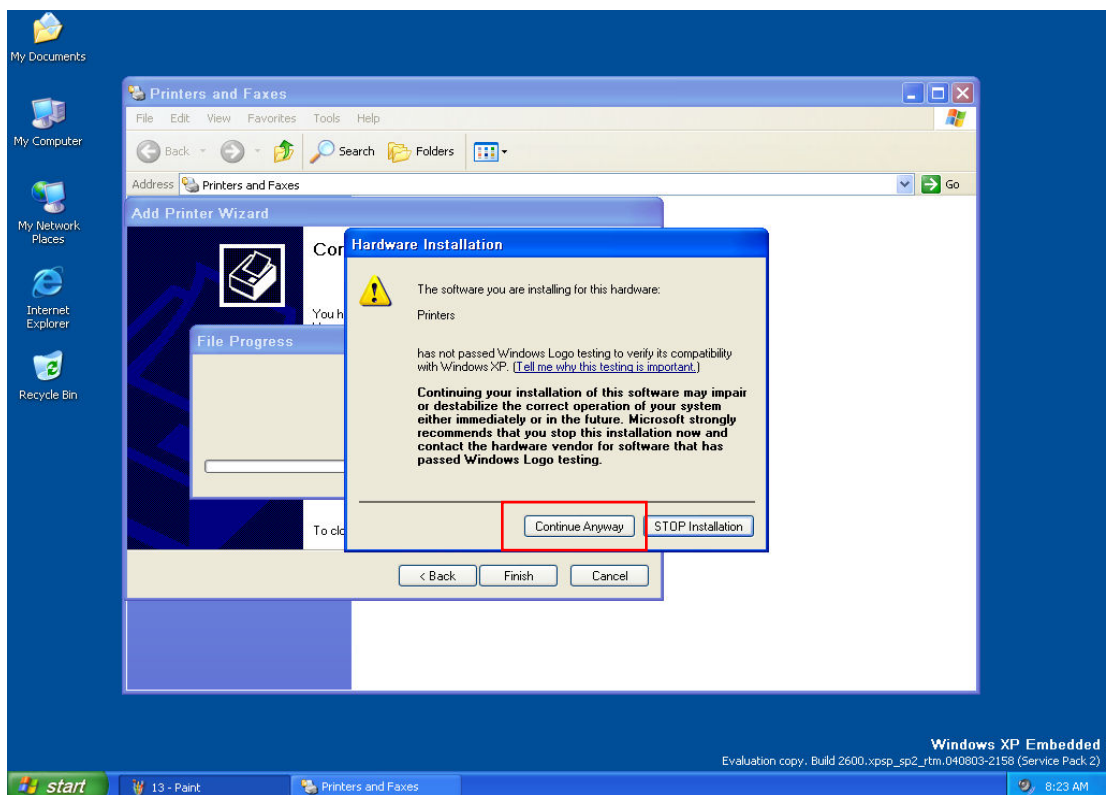
13) Select the option and click “Next” button.



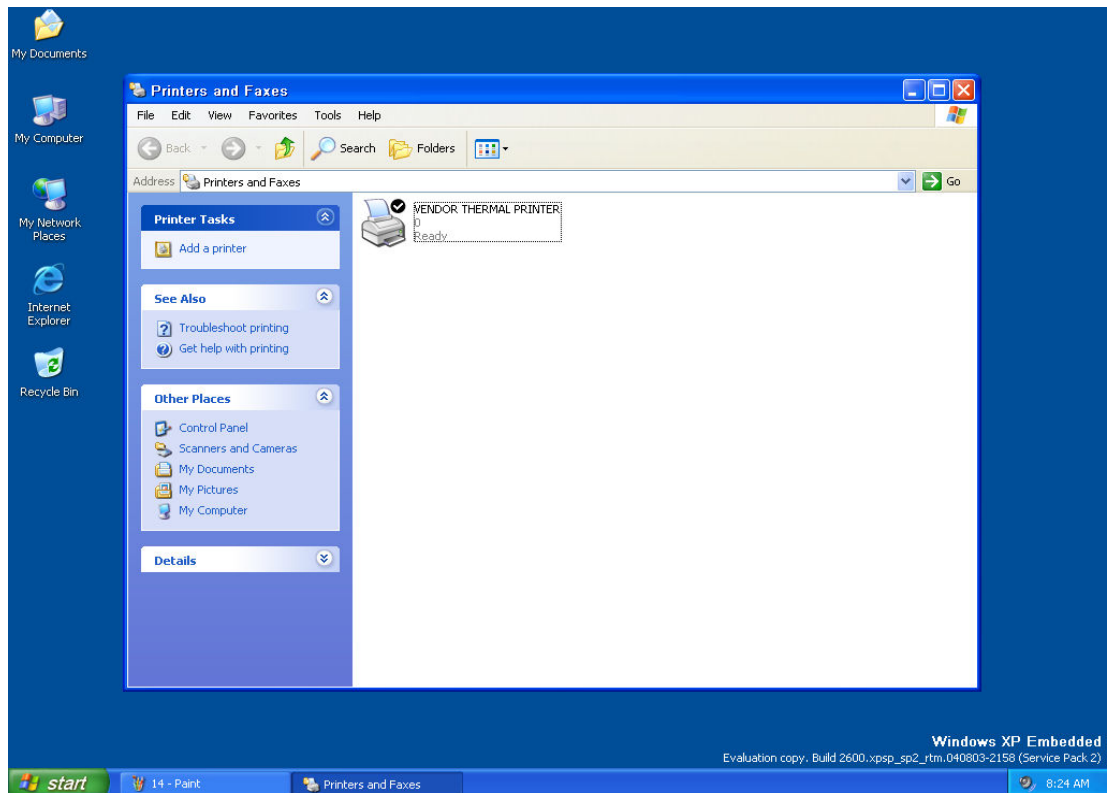
14) Click "Finish" button.



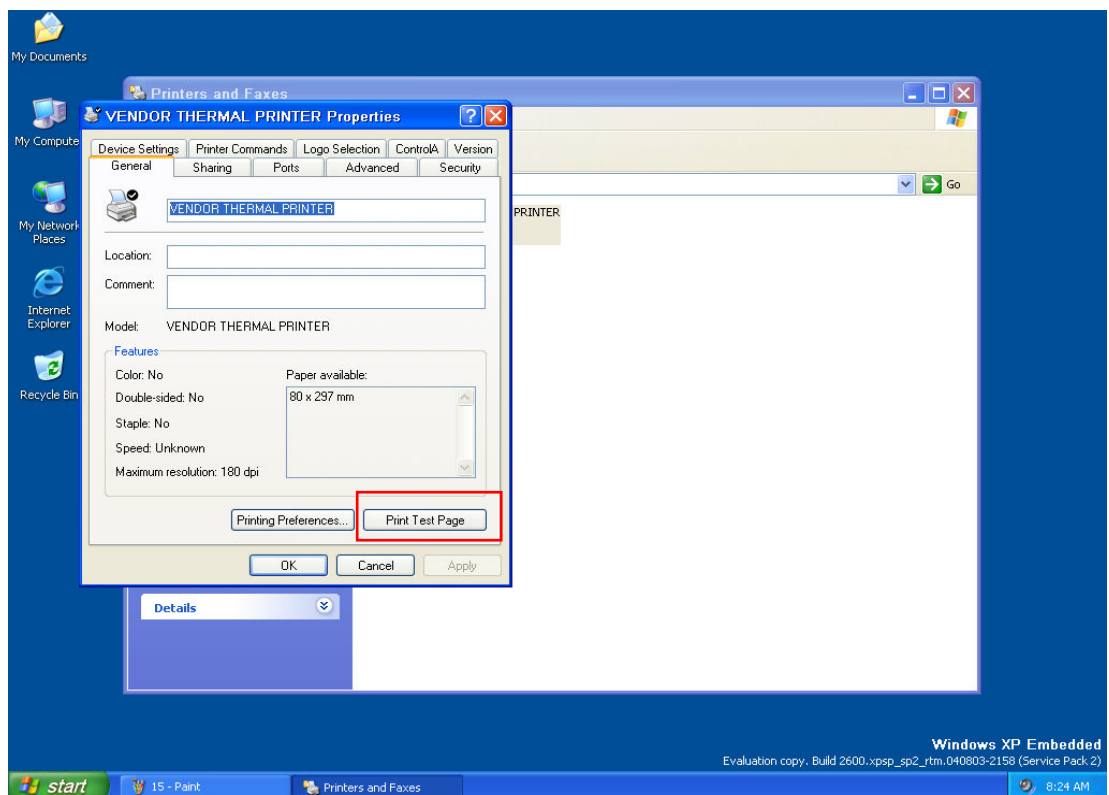
15) Click "Continue Anyway" button.



16) Windows Printer Driver is installed.

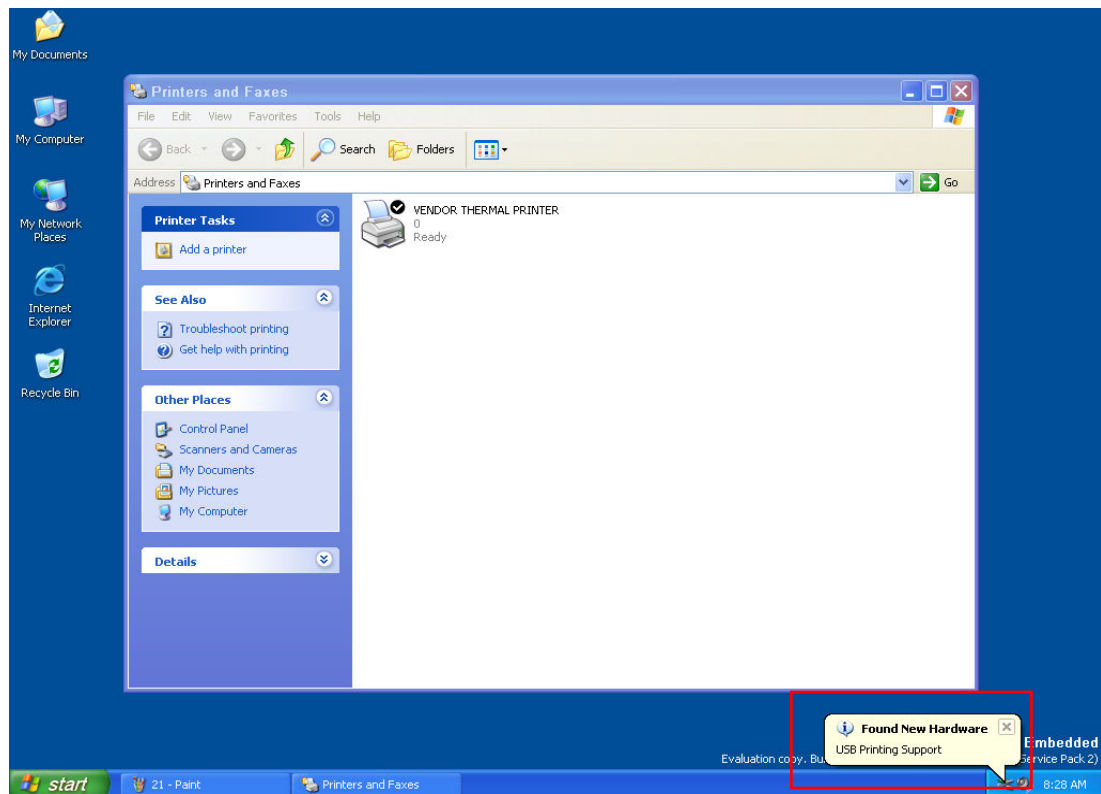


17) Click the "Print Test Page" button and check the printing status.

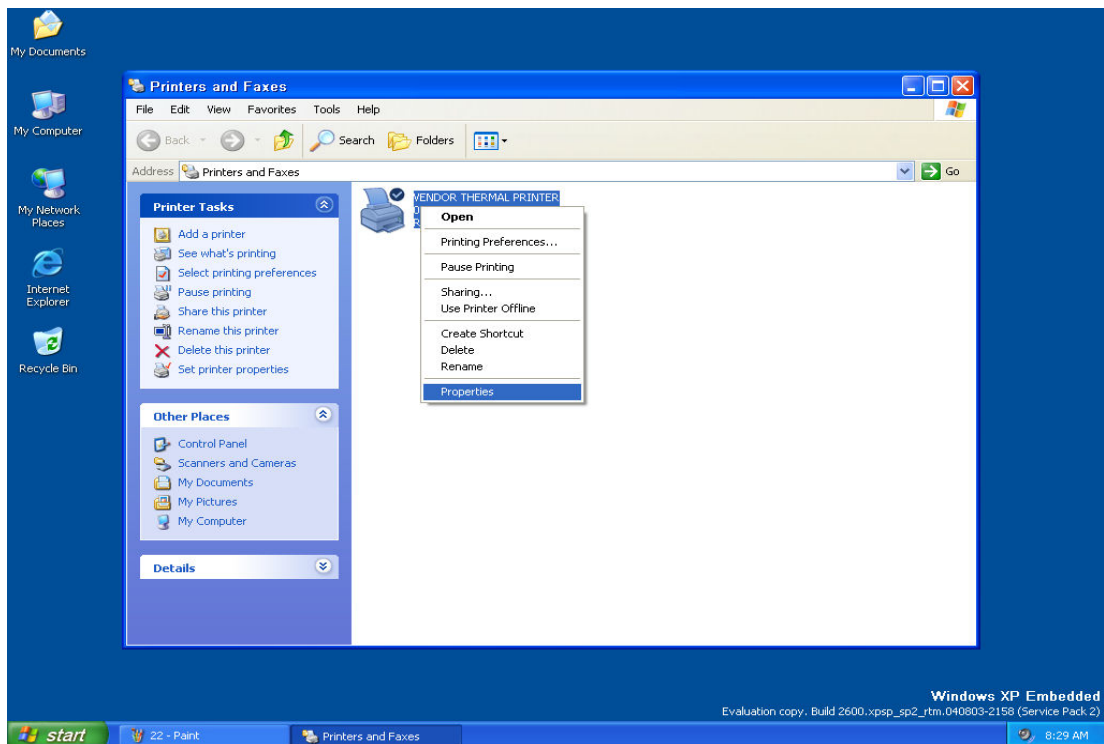


3.2. USB Interface setup

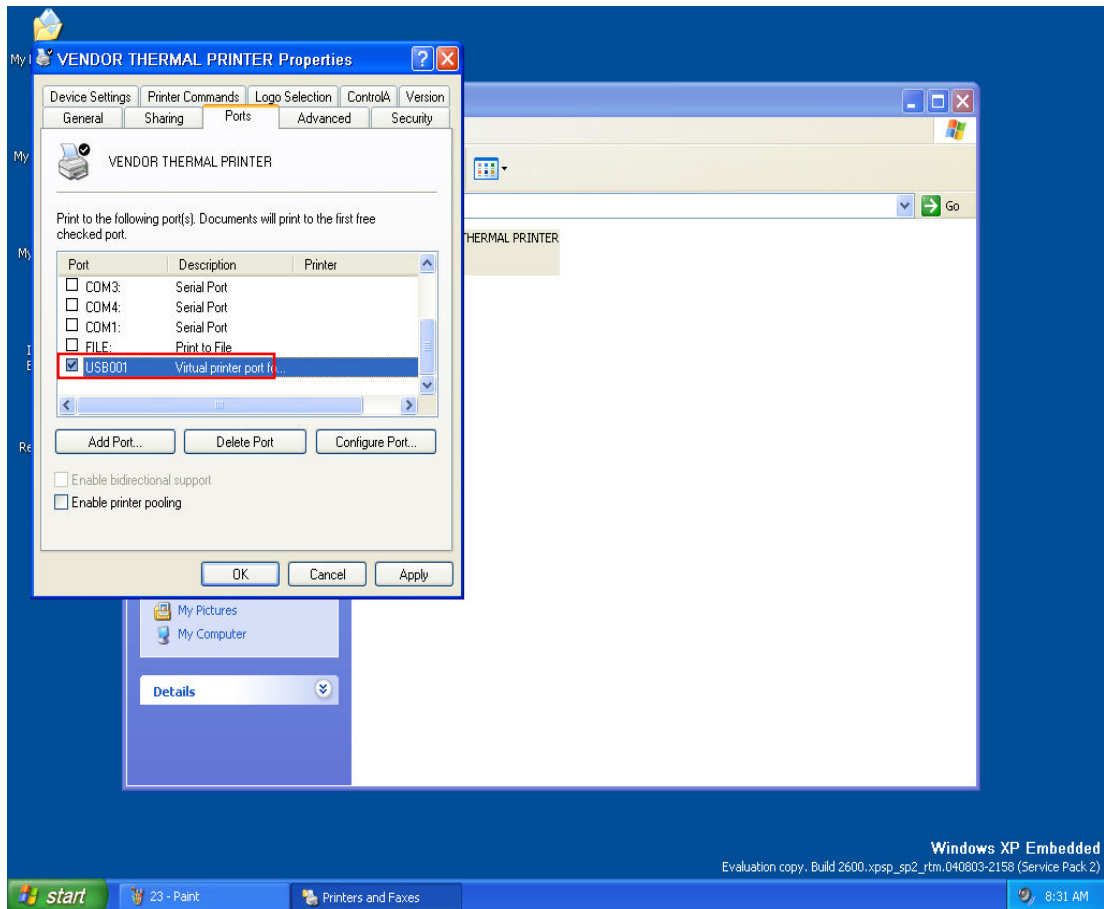
- 1) Connect the printer to Embedded Device and power on.



- 2) Click Printer's Properties.



3) You will see the USB Port has been selected in the Windows Driver properties.

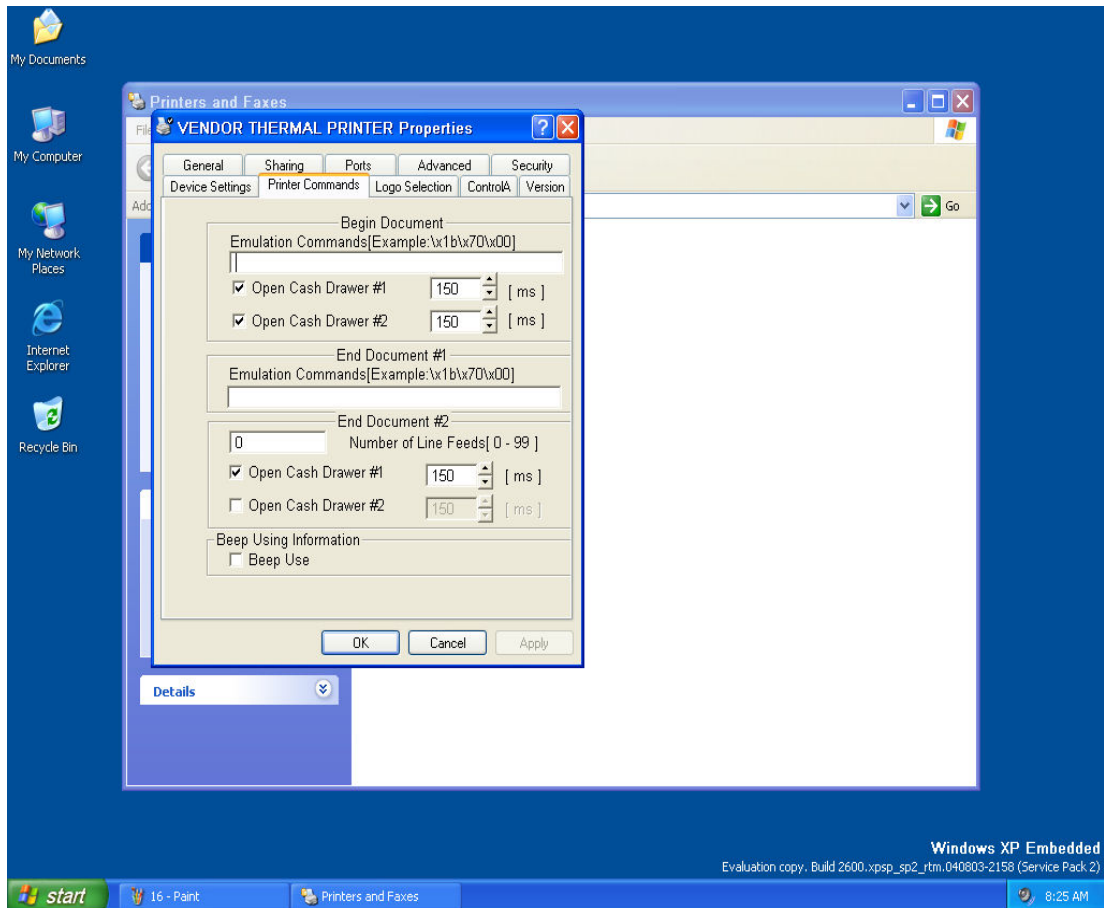


4. How to setup Windows Printer Driver Settings.

After installing the Windows Driver, you can use following functions.

4.1. Printer Commands.

- You can input additional commands to Begin Document or End Document when printing it.



5. Windows Printer Driver Specification.

5.1. Fonts

- The Windows Driver supports following device fonts.
- The device fonts get the printer performed high speed printing.

6.1.1. Standard Fonts

Printer Fonts	Size (Dot)	Size (Point)	Description
FontA1x1/FontA1x1[...]	(24 X 24)	9.5	Basic device font
FontA1x2/FontA1x2[...]	(24 X 48)	9.5	Vertical double enlargement
FontA2x1/FontA2x1[...]	(48 X 24)	18	Horizontal double enlargement
FontA2x2/FontA2x2[...]	(48 X 48)	18	Vertical-horizontal double enlargement
FontA2x4/FontA2x4[...]	(48 X 96)	18	Horizontal double enlargement Vertical quadruple enlargement
FontA4x2/FontA4x2[...]	(96 X 48)	36	Horizontal quadruple enlargement Vertical double enlargement
FontA4x4/FontA4x4[...]	(96 X 96)	36	Horizontal quadruple enlargement Vertical quadruple enlargement
FontA4x8/FontA4x8[...]	(96 X 192)	36	Horizontal quadruple enlargement Vertical octuple enlargement
FontA8x4/FontA8x4[...]	(192 X 96)	72	Horizontal octuple enlargement Vertical quadruple enlargement
FontA8x8/FontA8x8[...]	(192 X 192)	72	Horizontal octuple enlargement Vertical octuple enlargement
FontB1x1/FontB1x1[...]	(24 X 24)	9.5	Basic device font
FontB1x2/FontB1x2[...]	(24 X 48)	9.5	Vertical double enlargement
FontB2x1/FontB2x1[...]	(48 X 24)	18	Horizontal double enlargement
FontB2x2/FontB2x2[...]	(48 X 48)	18	Vertical-horizontal double enlargement
FontB2x4/FontB2x4[...]	(48 X 96)	18	Horizontal double enlargement Vertical quadruple enlargement
FontB4x2/FontB4x2[...]	(96 X 48)	36	Horizontal quadruple enlargement Vertical double enlargement
FontB4x4/FontB4x4[...]	(96 X 96)	36	Horizontal quadruple enlargement Vertical quadruple enlargement
FontB4x8/FontB4x8[...]	(96 X 192)	36	Horizontal quadruple enlargement Vertical octuple enlargement
FontB8x4/FontB8x4[...]	(192 X 96)	72	Horizontal octuple enlargement Vertical quadruple enlargement
FontB8x8/FontB8x8[...]	(192 X 192)	72	Horizontal octuple enlargement Vertical octuple enlargement

5.2. Bar codes.

- Following device barcode fonts are supported by the Windows Driver.

Select the device barcode font corresponding to the bar code type and input data to print it out.

Printer font name for bar code	Font size(Point)	Description
Codabar(NW7)	20/40/60/80	Codabar
Code128	20/40/60/80	Code 128
Code39	20/40/60/80	3 Of 9
Code93	20/40/60/80	Code 93
ITF	20/40/60/80	Interleaved 2 of 5
JAN13(EAN13)	20/40/60/80	JAN(EAN)13
JAN8(EAN8)	20/40/60/80	JAN(EAN)8
UPC-A	20/40/60/80	UPC-A
UPC-E	20/40/60/80	UPC-E

5.3. Device Control Fonts

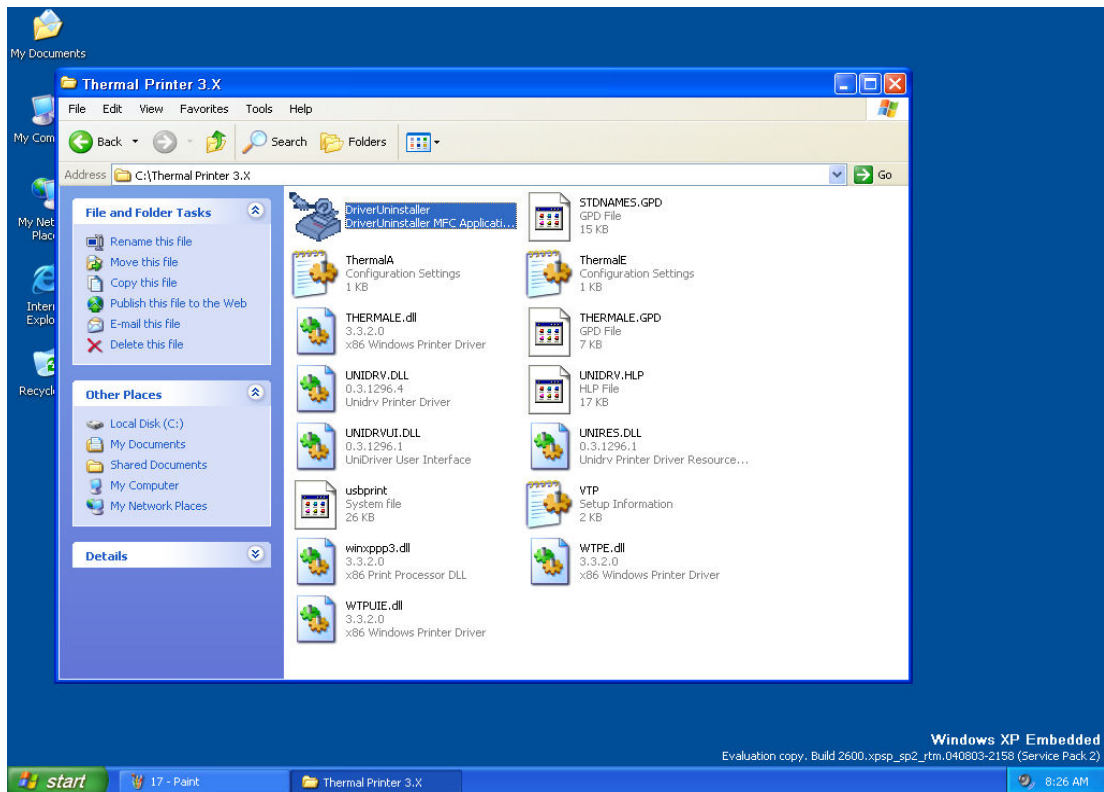
- The Windows Driver supports following control fonts.

The characters in below table are not printed out as it is provided just to support special functions of the printer.

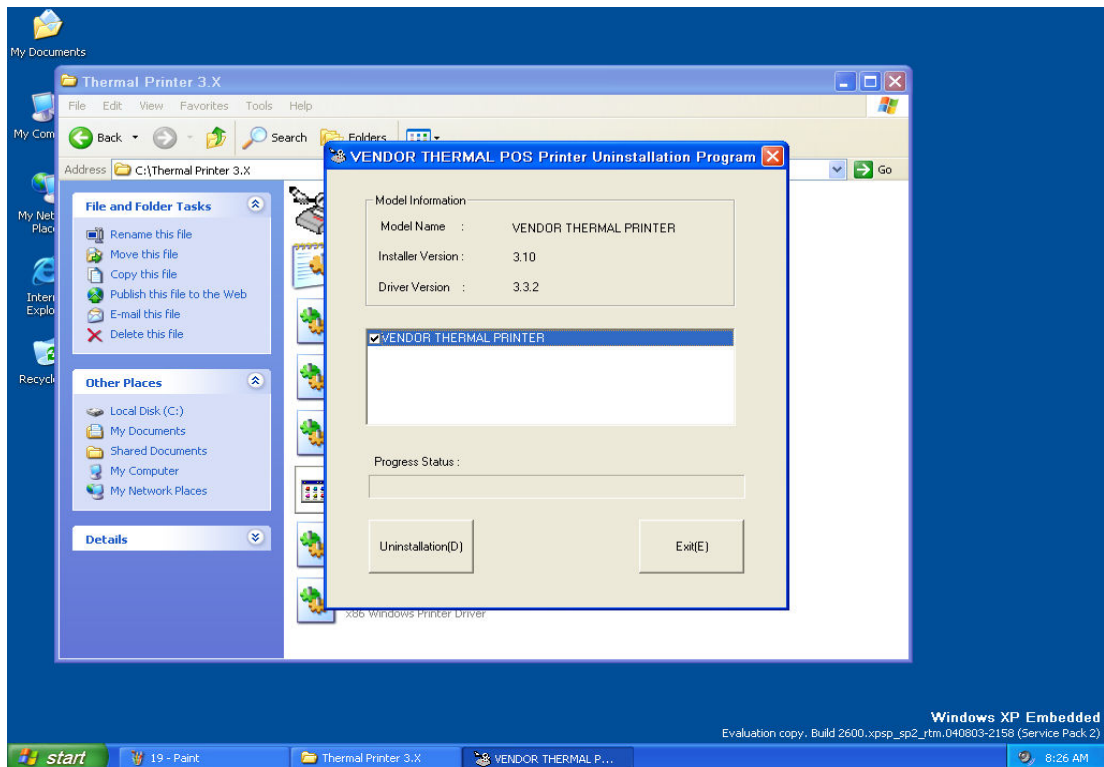
Character	Description
1	Print to journal.
2	Print to receipt.
3	Print to receipt and journal.
5	HT is output.
6	LF is output.
7	CR is output.
a	Open Drawer 2 (50ms drive pulse width)
b	Open Drawer 2 (100ms drive pulse width)
c	Open Drawer 2 (150ms drive pulse width)
d	Open Drawer 2 (200ms drive pulse width)
e	Open Drawer 2 (250ms drive pulse width)
f	Cut Receipt (full cut) without paper feeding.
g	Cut Receipt (partial cut) without paper feeding.
p	HRI characters are not added to the bar code.
q	HRI characters are added at the top of the bar code using Font A.
r	HRI characters are added at the bottom of the bar code using Font A.
s	HRI characters are added at the top of the bar code using Font B.
t	HRI characters are added at the bottom of the bar code using Font B.
u	Smoothing enabled.
v	Smoothing disabled.
w	Text is aligned left.
x	Text is centered.
y	Text is aligned right.
z	Cut Receipt with black mark.
A	Open Drawer 1 (50ms drive pulse width).
B	Open Drawer 1 (100ms drive pulse width).
C	Open Drawer 1 (150ms drive pulse width).
D	Open Drawer 1 (200ms drive pulse width).
E	Open Drawer 1 (250ms drive pulse width).
F	Cut Receipt (full cut).
G	NV bit image No. 1 is printed in the Normal mode.
H	NV bit image No. 2 is printed in the Normal mode.
I	NV bit image No. 3 is printed in the Normal mode.
J	NV bit image No. 4 is printed in the Normal mode.
K	NV bit image No. 5 is printed in the Normal mode.
P	Cut Receipt (partial cut)
[NV bit image No. 1 is printed in the Double Height Double Width mode.
]	NV bit image No. 2 is printed in the Double Height Double Width mode.
^	NV bit image No. 3 is printed in the Double Height Double Width mode.
_	NV bit image No. 4 is printed in the Double Height Double Width mode.
`	NV bit image No. 5 is printed in the Double Height Double Width mode.
!	Print stamp.

6. How to uninstall the Windows Driver.

- 1) Double-click Uninstallation program of the windows Driver (DriverUninstaller.exe).



- 2) Select the printer driver to remove and click the "Uninstallation(D)" button.



- 3) Click the “OK” button and the Embedded Device will start to reboot.

